

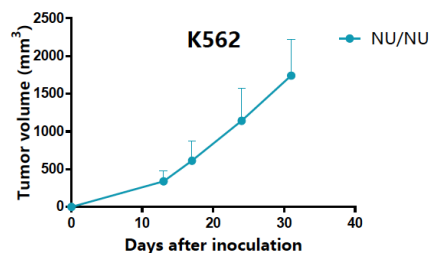
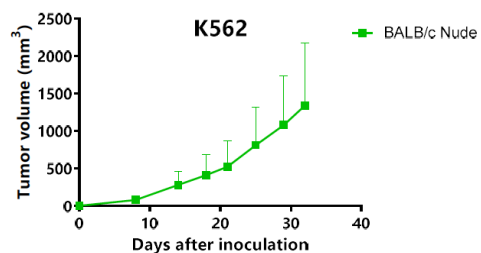
NU/NU与BALB/c Nude成瘤项目



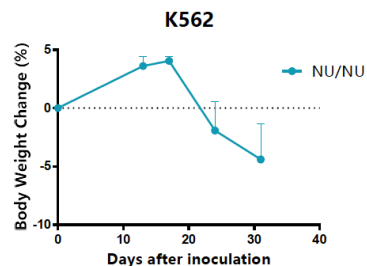
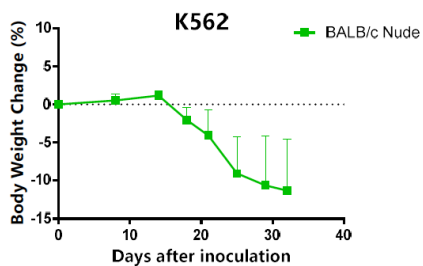
细胞系: K-562

人慢性髓原白血病细胞

Tumor volume



Bodyweight change



接种条件

1×10⁷/只+基质胶

接种时间

6-8周龄

数量

5只

结论

NU/NU成瘤速度优于BALB/c Nude, NU/NU对肿瘤耐受性优于BALB/c Nude, 且个体间差异更小, 建议选择NU/NU。